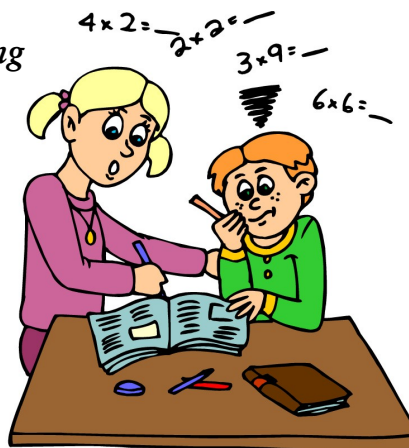


** Pre-K Before Care only offered at Essig Center Location

School Age Child Care

2010-2011

Quality before and after school child care provides a place for your child to enjoy fun games, arts & crafts, receive homework assistance, participate in character-building activities, and make new friends!



NOW ACCEPTING REGISTRATIONS FOR

BOONES MILL BURNT CHIMNEY
 DUDLEY * ESSIG CENTER* * LEE WAID
 ROCKY MOUNT WINDY GAP*

* Before Care at Boones Mill, Burnt Chimney & Essig Center

Only

Weekly Fees:		Part Time Fees (After School Only)		
After School	\$40/week (K-5th)	# Days	K-5th	Pre-K
	\$50/week (Pre-K)	1	\$10.00	\$12.50
Before School	\$26/week (K-5th)	2	\$20.00	\$25.00
	\$32.50/wk (Pre-K)	3	\$30.00	\$37.50
		4	\$40.00	\$50.00
		5	\$40.00	\$50.00

Registration Fee \$35

**CONTACT THE YMCA
 FOR REGISTRATION**



*We build strong kids, strong families,
 strong communities.*

FRANKLIN COUNTY FAMILY YMCA
 235 Technology Drive P.O. Box 720
 Rocky Mount, VA 24151
 540.489.YMCA (9622)
www.franklincountnymca.org

